



MATERIALS

Patons® Classic Wool Worsted™ (3.5 oz/100 g; 210 yds/192 m)

Main Color (MC) Aran (00202) **4 balls**

Contrast A Navy (77110) **1 ball**

Contrast B Aquarium (77201) **1 ball**

Size U.S. 7 (4.5 mm) knitting needles **or size needed to obtain gauge.**
20" [51 cm] square pillow form. Optional: Pom-pom Maker

ABBREVIATIONS: yarnspirations.com/abbreviations

Approx =
Approximate(ly)

K = Knit

P = Purl

Pat = Pattern

Rep = Repeat

RS = Right side

Sl1yb = Slip next

stitch purl-wise with

yarn in back

Sl1yf = Slip next
stitch purl-wise with
yarn in front

St(s) = Stitch(es)

WS = Wrong side



INTERMEDIATE

MEASUREMENT

Approx 20" [51 cm] square.

GAUGE

20 sts and 26 rows = 4" [10 cm] in
stocking stitch.

INSTRUCTIONS

Note: Carry color not in use loosely
up RS of work.

With MC, cast on 97 sts.

Work 2 rows garter st (knit every
row), noting first row is RS.

Work Chart 1 to end of chart,
reading RS rows from right to left
and WS rows from left to right,
noting 24-st rep will be worked
4 times. Chart 1 is shown on page 2.
These 40 rows form Mosaic Chart
Pat.

Work a further 160 rows in
Mosaic Chart Pat (200 rows total).
With MC, work, 2 rows garter st.
Piece should measure approx
19½" [49.5 cm] long. Cast off.

Back (make 2 pieces alike)

With MC, cast on 95 sts.

1st row: (RS). K2. *P1. K1. Rep
from * to last st. K1.

2nd row: *K1. P1. Rep from * to
last st. K1.

Rep last 2 rows twice more
(6 rows total).

Proceed in garter st until work
from beg measures 12¼" [31 cm].
Cast off.

FINISHING

Pin pieces to measurements. Cover
with a damp cloth, leaving cloth
to dry.

Overlap Back pieces to match
Front, with ribbed sections in
center to create opening to insert
pillow form. Sew outer edge seams.

Pompoms (make 4)

Wind B around 4 fingers approx
100 times. Remove from fingers
and tie tightly in center. Cut
through each side of loops. Trim
to smooth round shape. Attach
pom-pom to each corner of Pillow
as shown in photo. Optional: Use
Pom-pom Maker to make Large
Pompoms.

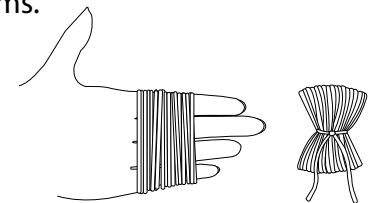
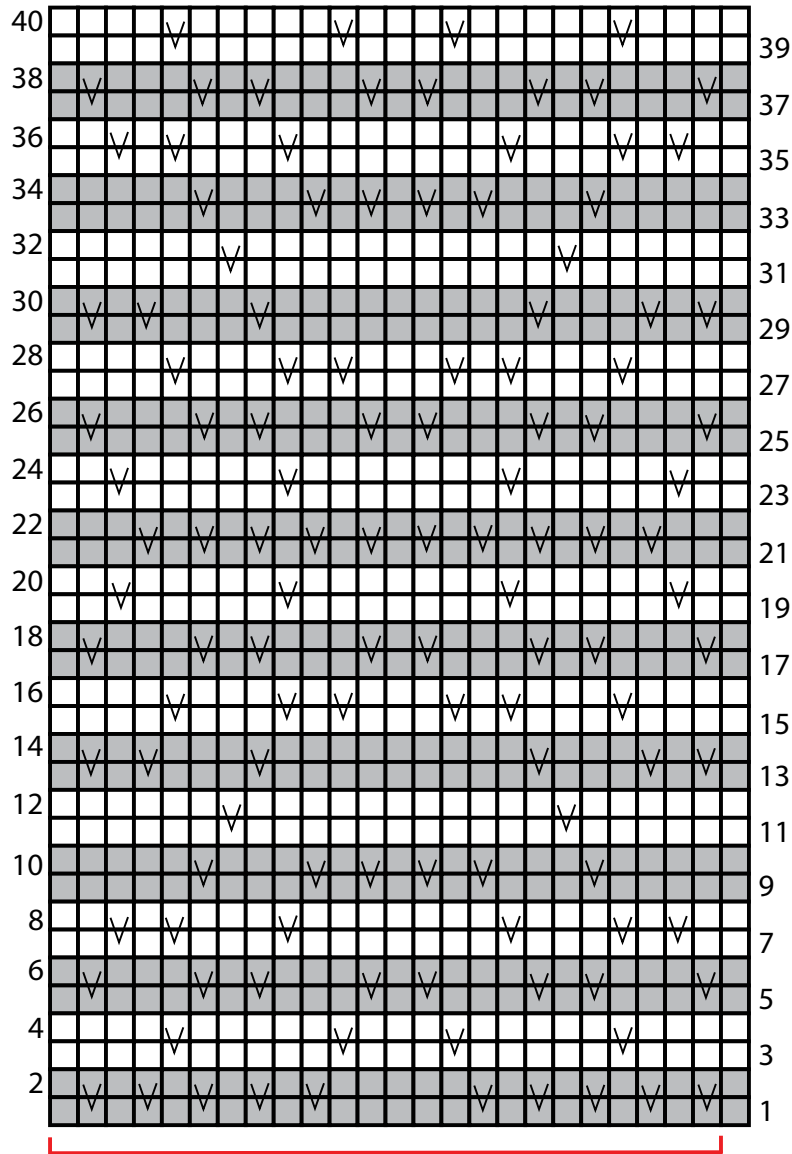




Chart I



Repeat section



Key

- = With MC, knit
- = With MC, Sl1yb on RS rows, Sl1yf on WS rows
- = With A, knit
- = With A, Sl1yb on RS rows, Sl1yf on WS rows